

Inter-Tel 5000 Series IP Communication Solutions



*Flexible
solutions for
evolving
businesses*



Inter-Tel 5000 Series



Today's IP-Centric Communications Platform

In today's competitive business environment you understand the need to optimise the performance of your organisation by utilising technology that allows you to operate more effectively. Voice over IP (VoIP) can add value to your organisation, and with Inter-Tel's latest product offering you have a system that considers your unique business requirements, allowing you to deploy VoIP technology efficiently, effectively and successfully.



CS-5200 Communications Server

Inter Tel 5000 Network Communications Solutions for Small and Medium Businesses

Combining your voice system and your data network affords you the cost-effective and competitive edge your business needs to succeed. The Inter-Tel 5000 IP communication platform offers a network-centric communications solution that allows you to join geographically dispersed associates and multi-site locations. Whether you are connecting offices and applications together over a data network, or deploying IP endpoints to employees in or out of the office, all your employees have access to the same system features as if they were located in your central office. Additionally, the Inter-Tel 5000 IP communications platform supports multiple software applications. The results are operational efficiencies and a foundation for a more flexible infrastructure.

The Inter-Tel 5000 Series IP Communication Solutions...

- ... leverage the best of new technology including network architecture, IP and application standards.
- ... provide IP and digital technology options and applications support.
- ... offer initial investment and long-term costs benefits including mobility; enhanced customer care; and seamless, multi-site IP network connectivity.
- ... are easy to implement and support through system compatibility and migration options; and centralised, network-based administration.
- ... improve the efficiency of internal and external communications and employee responsiveness to business.



S8000 Series SIP Endpoints

FAST FACT...

The Inter-Tel 5000 is a family of IP-centric communications server products built on an advanced hardware architecture that optimises the latest in VoIP technology, while leveraging Inter-Tel's long history of feature development and 35 years of industry experience.



Networking Made Easy



Inter Tel 5000 Network Solutions

The Inter-Tel 5000 IP communications platform consists of two primary systems (CS-5200 and CS-5400) that can transparently network up to 63 different locations. Each server is equipped and licensed for networking 'out of the box' and networking capacities can be easily expanded with a one-time license. Additionally, if you want to network to other systems over IP, this system requires no additional hardware or licensing.

The Inter-Tel CS-5200 communication server is designed for the small business, offering built-in support for up to 25 IP endpoints and four ports of built-in voice mail, as well as system networking over IP or E-1 for seamless connectivity within a multi-site environment.

The Inter-Tel CS-5400 communication server is designed for the larger customer requiring up to 110 IP endpoints. The Inter-Tel CS-5400 is built on an Inter-Tel CS-5200 through an upgraded processor expansion card that is installed in the dedicated processor bay.



CS-5400 Communications Server

The Inter-Tel CS-5200 and CS-5400 Offer:

- Support for Inter-Tel and third-party software applications, for example CTI.
- Support for Inter-Tel S8000 series IP and wireless endpoints.
- Built-in four-port basic voice mail (upgradable with Windows 2000 Voicemail or Enterprise Messaging).
- Two built-in analogue trunk ports.
- Two built-in analogue extension ports.
- Three module bays allow for internal expansion and can be used in any combination:
 - E-1/PRI Module can be used to connect to other Inter-Tel CS-5000 Servers or to Primary-Rate services.
 - Analogue exchange line module enables connectivity of two PSTN exchange lines.
- Basic-Rate connectivity.
- In-built modem for remote diagnostics and programming.

Digital and Analogue Support

When you require digital and analogue extensions, the Inter-Tel DE-5200 digital expansion interface allows for the connection of up to 48 digital endpoints. Up to two Inter-Tel DE-5200s can be added to either an Inter-Tel CS-5200 or Inter-Tel CS-5400 server, enabling you to deploy up to 96 digital endpoints. With additional Inter-Tel hardware, digital ports on the DE-5200 may be converted to analogue extensions.

The Inter-Tel DE-5200 Offers:

- Three modular bays that each accept a digital endpoint module.
- Support for a single line adapter allowing for two analogue endpoints to connect as separate extensions using a single digital port.
- Support for Inter-Tel 8000 series digital endpoints.



DE-5200 Communications Server

FAST FACT...

Inter-Tel 5000 communications servers may be networked with an existing Inter-Tel Axxess® communications system, offering backwards migration compatibility and expansion of IP networking.

In Detail

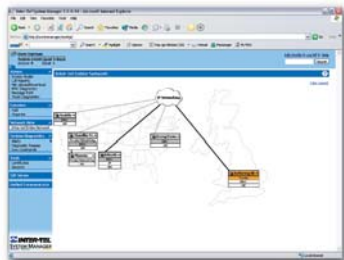
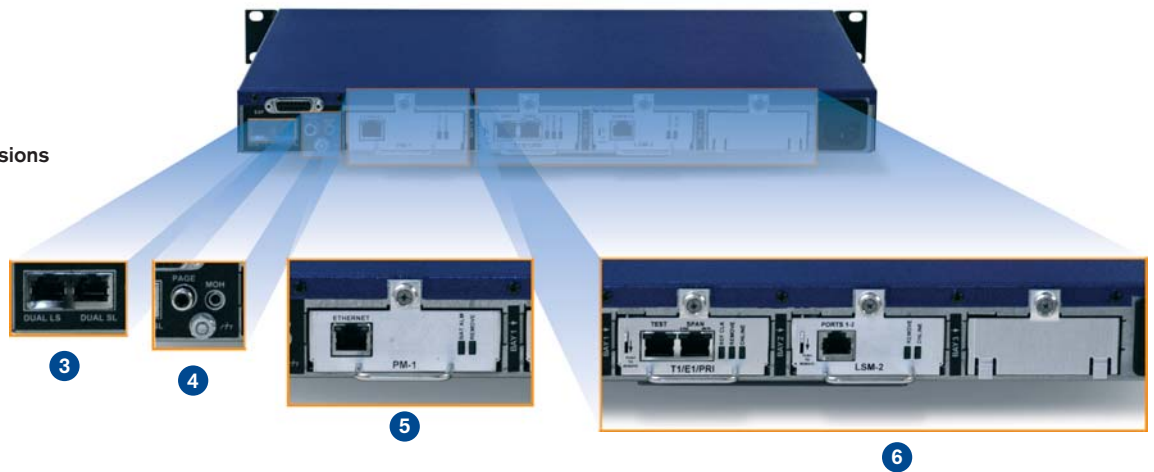


Front View

- 1 Display Panel
- 2 Compact Flash Storage and USB connectivity

Rear View

- 3 Analogue Single Line Extensions
- 4 Paging & Music-on-hold (MOH)
- 5 Processor Module
- 6 Modular Expansion Bays



Managing Your Networked System

When your small single system grows into a large networked system covering multiple locations running many applications, you need a way to manage and maintain all of these points. Inter-Tel's System Manager is a tool that provides a single visual point to view your systems and applications allowing for programming and diagnostics through a single interface increasing efficiencies and resources.

Standards-based Architecture

Inter-Tel is committed to providing standards-based solutions which enable businesses to take advantage of existing corporate architecture during transition to the network-centric communications model. This support of voice and data standards allows the Inter-Tel 5000 Network Communications Solutions to efficiently and effectively coexist within the network environment.

Inter-Tel supports the following standards:

- Session Initiation Protocol (SIP)
- Media Gateway Control Protocol (MGCP)
- IEEE Standards: 802.11b, 802.3af
- ITU Standards: G.711, G.729a, G.729a/b and T.38
- Enabling Technologies: Wireless Application Protocol (WAP), ActiveX, LDAP, Microsoft® development framework .NET
- CT Enablers: Open Architecture Interface (OAI), TAPI Service Provider



Inter-Tel Europe Limited

2260 Kettering Parkway
Kettering
Northamptonshire
NN15 6XR

T: +44 (0) 116 290 3000

F: +44 (0) 116 290 3001

E: info@inter-teleurope.com

www.inter-teleurope.com

